



## **Town of Sunset Beach Request for Proposals: Traffic and Parking Study**

The Town of Sunset Beach is seeking proposals from qualified professional consultants to conduct a comprehensive **Traffic and Parking Study** for the Town's barrier island. The study will review the existing Island Paid Parking Plan and address safety, legal compliance, and improvements to parking and traffic flow.

### **Scope of Work:**

The selected firm will evaluate vehicle and pedestrian circulation, parking safety, signage, ADA compliance, and stormwater concerns. Tasks include right-of-way assessments, sight distance analysis, pedestrian and cyclist safety reviews, and coordination with public safety agencies. The consultant will compile findings and recommendations into a final report and present it to the Town Council.

### **Proposal Requirements:**

Submittals must include a cover letter, firm qualifications, key staff resumes, project approach, references, proposed schedule, and billing rates.

### **Timeline:**

- RFQ Issued: January 21, 2026
- Proposal Deadline: **February 4, 2026, by 5:00 PM**
- Staff Review: February 6, 2026
- Council Interviews: February 9, 2026
- Selection and Negotiations: February 12–24, 2026

### **Submission Details:**

Seven sealed copies of the proposal must be delivered to:  
Town of Sunset Beach  
Attn: Ken Klamar, Interim Town Administrator  
700 Sunset Blvd North  
Sunset Beach, NC 28468

The full RFP is available online at <https://sunsetbeachnc.gov/legal-advertisements>.  
For more information, contact **Ken Klamar, Interim Town Administrator/Town Clerk**, at **910-579-6297**.



# Request for Proposal

## Traffic and Parking Study

The Town of Sunset Beach is accepting proposals from qualified professional consultants and firms for providing a study of parking and traffic on the Town's barrier island. The submitting firms shall have experience and knowledge in the fields of beach parking analysis, traffic and pedestrian circulation, and directional signage.

### Background

The Town has a permanent population of approximately 4,700 (combined mainland and island), and during the "season" the seasonal population becomes approximately 12,000- 15,000. The island is roughly three miles long within the Town limits (some of the island is un-inhabited and is outside the corporate limits and some of it is in South Carolina). Currently, there is a public parking lot adjacent to the beach strand (the Gazebo Lot), a public parking lot on Sunset Boulevard, and four private parking lots adjacent to the Gazebo Lot and near or fronting on Main Street. Street parking is located on Main Street, North Shore Drive East and West, on Short Streets (7<sup>th</sup> – 11<sup>th</sup>) and on Canal Drive. The Town's Land Use Plan Update is a useful study of current and future projected conditions in regard to traffic and parking and can be accessed on the Town's website.

### Objectives

The Town's objectives for this study include:

To evaluate vehicle and pedestrian traffic circulation, safety and parking and identify problem areas;

To analyze pedestrian activity, and evaluate the need for sidewalks, crosswalks, and accessibility to public facilities and businesses;

To evaluate current directional and parking signage;

To seek input from the Town Council and the community at large, through public hearings and other means in order to understand the issues; and,

To summarize the findings and offer suggestions for improvement.

### **Scope of Work**

Introduction:

The Town of Sunset Beach is inviting qualified parking and traffic firms to submit proposals for a review of the Town's existing Island Paid Parking Plan. The purpose of the review is to ensure compliance with the following objectives:

1. Safety and Legal Concerns: Identify any safety and legal concerns with the current parking schemata and provide recommendations to address these issues.
2. Legal and Safety Measures: Ensure that all necessary legal and safety measures are in place to support the proposed improvements.
3. Designated Parking Spots: Identify acceptable designated parking spots and recommend any necessary modifications. Identify designated parking spots that pose a legal or safety issue and propose their removal.
4. Removal of Inadequate Parking Spots: Identify parking spots that are not meeting the required standards and propose their removal.
5. Improved Parking Schemata: Develop a revised parking scheme that addresses the identified concerns and enhances the overall parking experience for residents and visitors.

#### A. Right-of-Way Assessment

- Review recorded plats, right-of-way documents, and available mapping
- Identify whether existing parking spaces are located within public right-of-way
- Identify apparent encroachments or boundary conflicts, if any

After analyzing the right-of-way and identifying any encroachments, regardless of the size of the encroaching portion, determine the specific parking spot affected and provide recommendations on effective measures to minimize property intrusion. Include designated parking spots that shall be removed due to encroachment and/or other property liabilities.

#### B. Sight Distance and Visibility Analysis

- Evaluate sight lines near:
  - Intersections
  - Driveways
  - Beach access points
- Conduct analysis using generally accepted engineering and transportation standards, including applicable NCDOT guidance
- Identify locations where parked vehicles may impede visibility or create safety concerns

After reviewing the sight lines for all parking spots and identifying any slight line concerns, provide recommendations on how to address these concerns effectively.

### C. Vehicular Safety Review

- Assess safety considerations related to:
  - Entering and exiting parked vehicles
  - Door swing and travel lane conflicts
  - Interaction with moving traffic
- Identify areas with elevated safety risk based on observed conditions

### D. Pedestrian/Cyclist Safety Review

- Evaluate pedestrian movement along roadways and to and from beach access locations
- Identify potential conflicts between pedestrians and parked vehicles
- Provide general observations related to pedestrian visibility and access

### E. Americans with Disabilities Act (ADA) Compliance

Evaluate handicap spots to ensure compliance with ADA standards for accessible parking spaces, access lanes, and the accessible route to and from the beach. Clearly specify the exact parking spot dimensions and signage requirements. Recommend the appropriate number of handicap spots and recommend placement.

### F. Coastal Area Management Act (CAMA)

Review CAMA to ensure compliance.

### G. Insurance and Liability

Outline any or all required Town insurance policies and/or need for additional insurance policies clarifying the Town's liability for personal injury that may be incurred.

Outline all compliance documentation.

### H. Public Safety Coordination

- Coordinate with the Town's Police Department and Fire Department to obtain input related to:
  - Enforcement visibility
  - Emergency access and response
- Incorporate public safety input into overall findings

### I. Liability Considerations (High-Level)

- Identify potential areas of risk exposure related to:
  - Proximity of parking spaces to adjacent private property lines
  - Visibility obstructions affecting motorists or pedestrians
- Discussion shall be informational in nature only and shall not include legal opinions or determinations of fault

#### J. Stormwater

Identify parking spots that have drainage concerns and offer recommendations on how to abate the drainage concern.

K. Evaluate designated parking spots that enclose a vacuum manhole and make a recommendation on whether the spot shall remain.

L. Analyze 40<sup>th</sup> Street Parking Lot for safety and legality. Recommend a better parking configuration that allows for vehicular turn around.

Firm shall complete other tasks deemed necessary for the accomplishment of a complete and comprehensive parking and traffic analysis report. Firm shall be expected to expand on the above-noted tasks where appropriate, and provide suggestions that may enhance the results or usefulness of the study. The final scope of the work will be subject to negotiations with the selected consultant and approval by the Town.

Consultant shall compile all data, analysis, findings and recommendations into a final parking and traffic analysis report to be presented to the staff and the Town Council. Consultant will be expected to attend at least one Town Council meeting to present the final report.

### **Statement of Qualifications and Proposal**

The combined Statement of Qualifications and Proposal shall include the information outlined below:

#### Cover Letter

The cover letter is to be signed by an officer of the firm authorized to execute a contract with the Town.

#### Qualifications

Provide a summary of the consultant's qualifications, general information about the firm, location of office(s), years in business and experience in beach parking studies. Provide a brief description of projects which involved a similar scope of services.

#### Key Staff

Identify key staff and include a description of their abilities, qualifications and experience. Attach resumes of key staff to be assigned to this project.

Identify any portion of the scope of work that will be subcontracted. Include firm qualifications and key personnel, telephone numbers and contact person for all subcontractors.

### Project Approach

Consultant shall describe its understanding of the project and the proposed technical and management approach. Consultant shall describe its approach to complete each of the items and identified deliverables. Also describe how it would expand on the scope of the work where appropriate to accomplish the overall objective of the project, and provide suggestions on how it might enhance the results or usefulness of the study. Include assumptions about the number of meetings needed with Town staff to complete the Scope of Work.

### References

Consultant shall provide a list of references for the firm and any subcontractors, including names, addresses and telephone numbers of recent clients, preferably other public agencies for which Consultant has done similar work. Include list of specific projects associated with each reference, date work was performed, cost and key personnel involved.

### Schedule

Propose a timeline for completion of the study including start date, milestones and target completion date.

### Rates

Provide the billing rates for each classification of proposed staff, including sub-consultants. Provide proposed overhead percentages.

### **Selection Process**

#### Evaluation of submittals

The purpose of this evaluation is to determine whether the submitting company is qualified to successfully complete the work and has experience producing the type of analysis and report requested. Based on this evaluation, the Town will identify from one to five firms that are considered qualified. Proposals will be evaluated on various qualifications, including but not limited to:

- Experience of key personnel and staffing capabilities
- Understanding of scope of project
- Technical approach

- Experience and demonstrated competence on similar projects
- Experience in conducting public hearings/workshops
- History of working effectively with public agencies

Scoping Meeting

The top-ranked consultant shall meet with Town staff and the Town Council to ensure that the consultant has a complete understanding of the project and to refine the scope of services, if necessary.

Cost Proposal

A proposed total cost of work, showing any unit costs and proposed expense amounts.

**General Information**

Consultant shall submit seven copies of their Proposal to the Town. Proposals must be submitted in a sealed envelope in response to this RFP. Proposals must be received no later than 5pm on February 4, 2026 at the following address:

Town of Sunset Beach

Attn: Ken Klamar, Interim Town Administrator

700 Sunset Blvd, North

Sunset Beach, NC 28468

**Selection Time Frame**

RFQ Issued	January 21, 2026
Qualifications/Proposal Submittal Deadline	Feb 4, 2026
Staff Reviews and Ranks Top Three to Five	Feb 6, 2026
Town Council Selection of Firms to Interview	Feb 9, 2026
Interviews and Selection	Feb 12, 2026
Negotiations Commence w/ That Firm	Feb 16, 2026
Cost Proposal Submitted	Feb 20, 2026
Council Decision	Feb 24, 2026

# Attachment 1

# ADDENDUM D

## PARKING MAPS

Streetscape  
APPROX. 66 SPACES



# ADDENDUM D

## PARKING MAPS

# Gazebo Area

APPROX. 54 SPACES

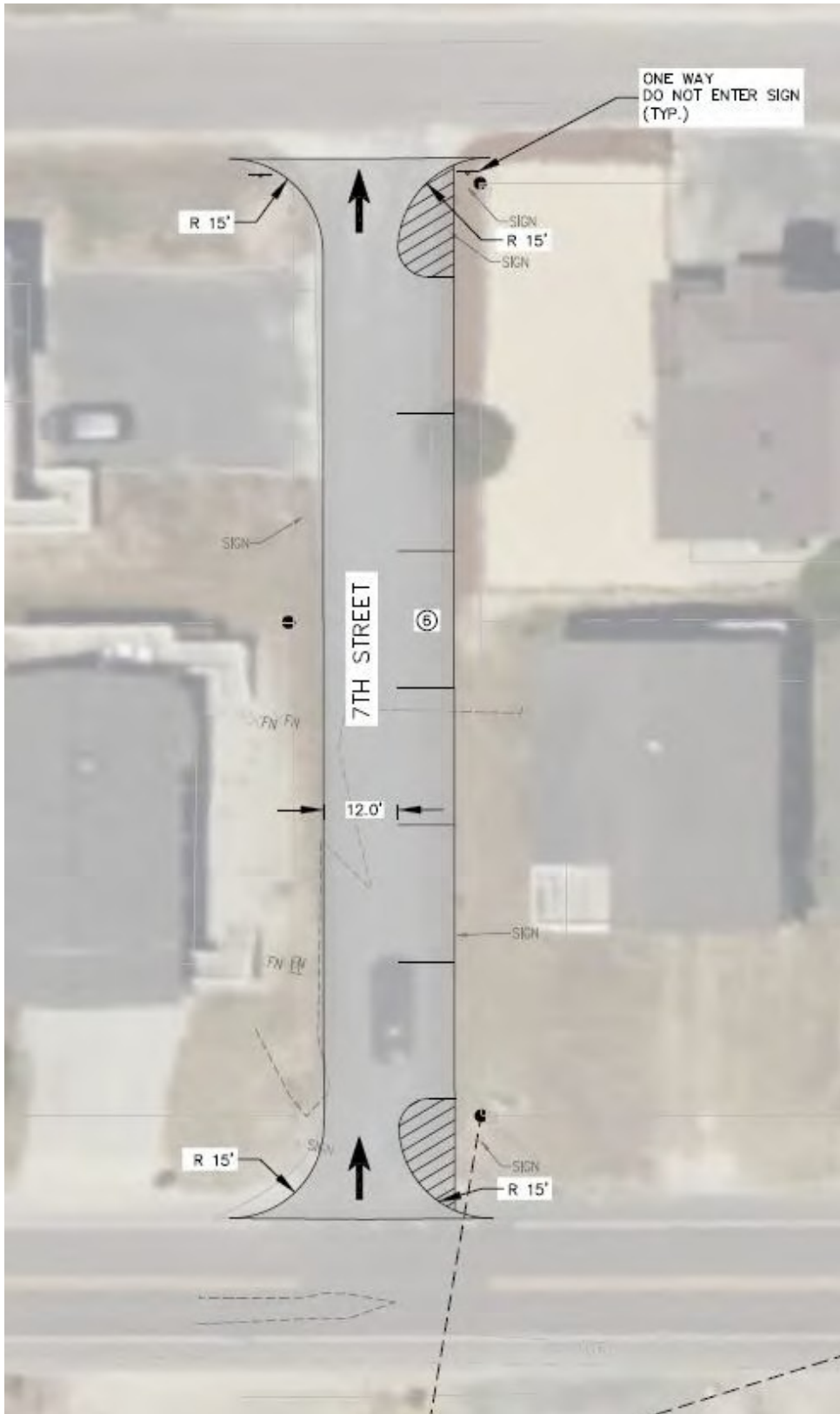


# ADDENDUM D

## PARKING MAPS

**7<sup>th</sup> Street**  
**(under construction)**

APPROX. 6 SPACES



# ADDENDUM D

## PARKING MAPS

# 8th Street (under construction)

APPROX. 6 SPACES

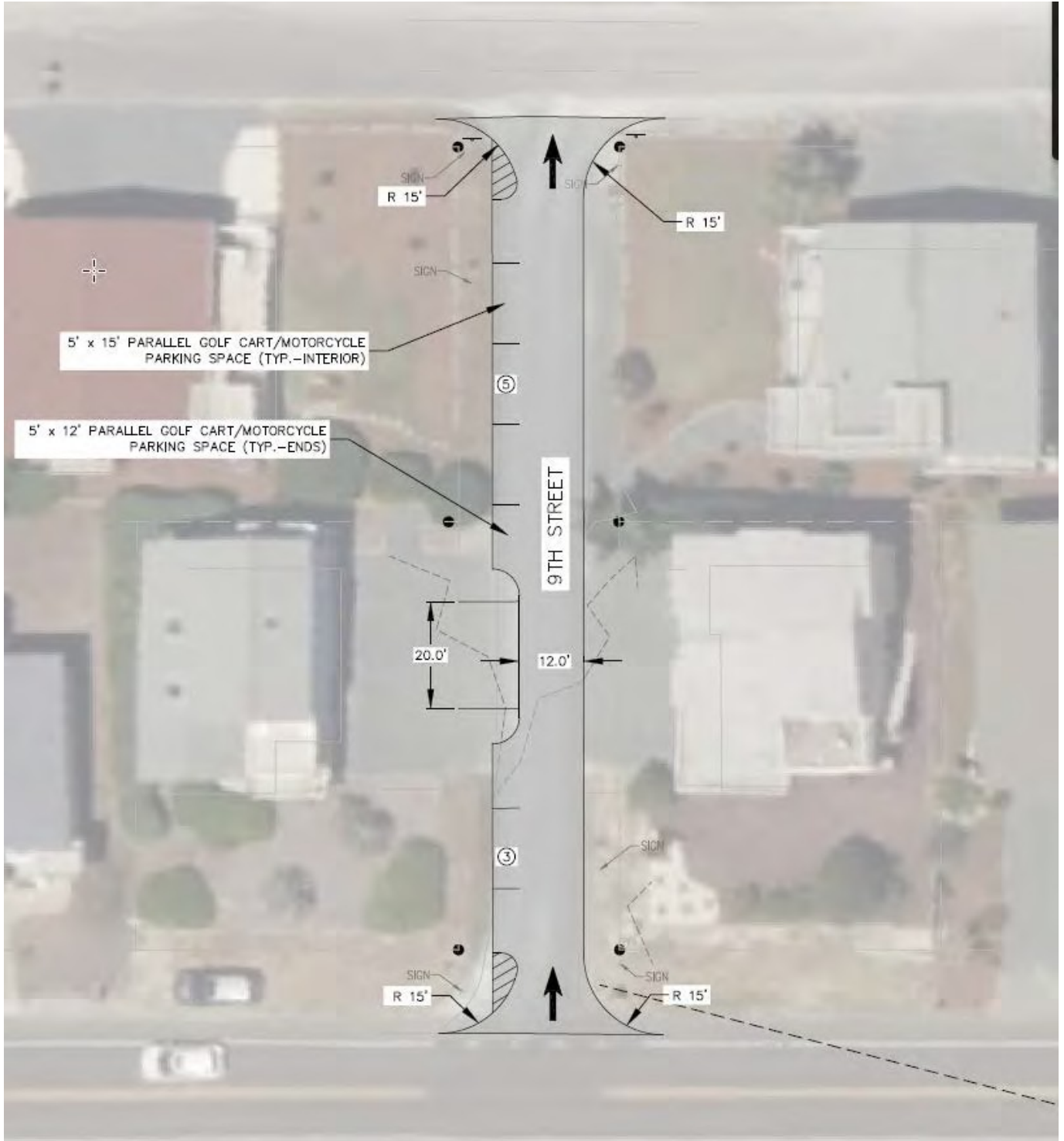


# ADDENDUM D

## PARKING MAPS

**9<sup>th</sup> Street**  
**(under construction)**

APPROX. 8 SPACES

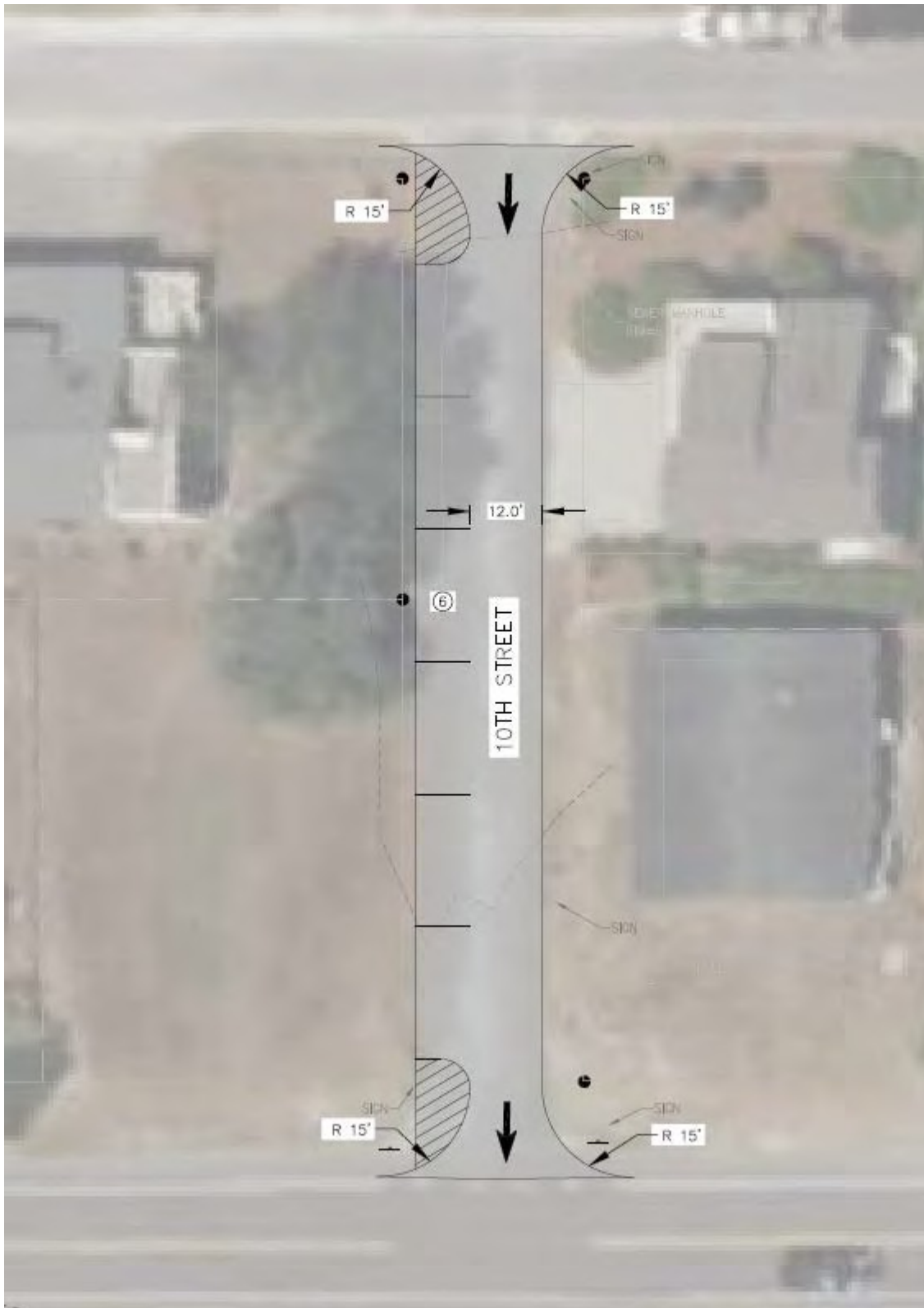


# ADDENDUM D

## PARKING MAPS

**10<sup>th</sup> Street**  
**(under construction)**

APPROX. 6 SPACES

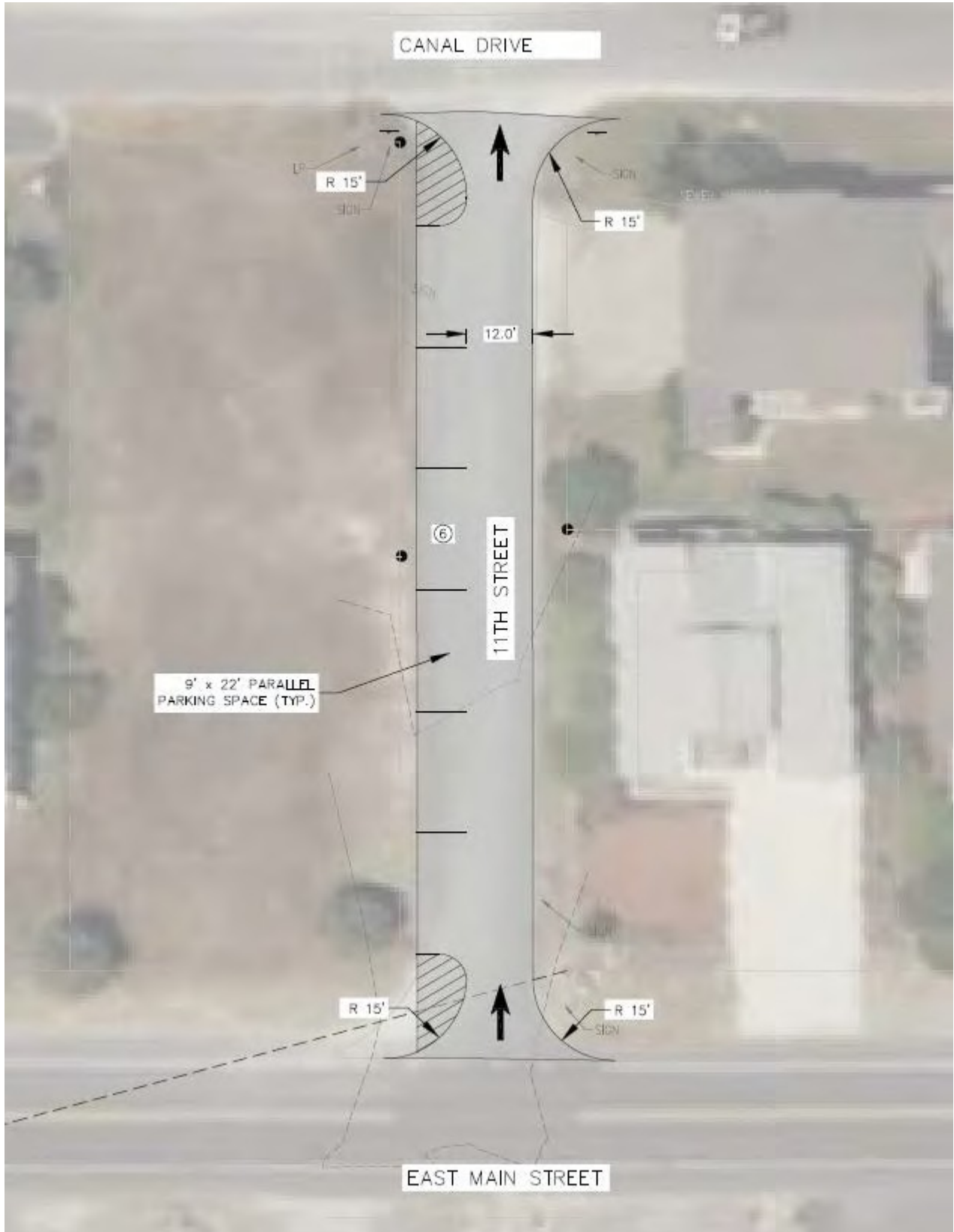


# ADDENDUM D

## PARKING MAPS

**11th Street**  
(under construction)

APPROX. 6 SPACES

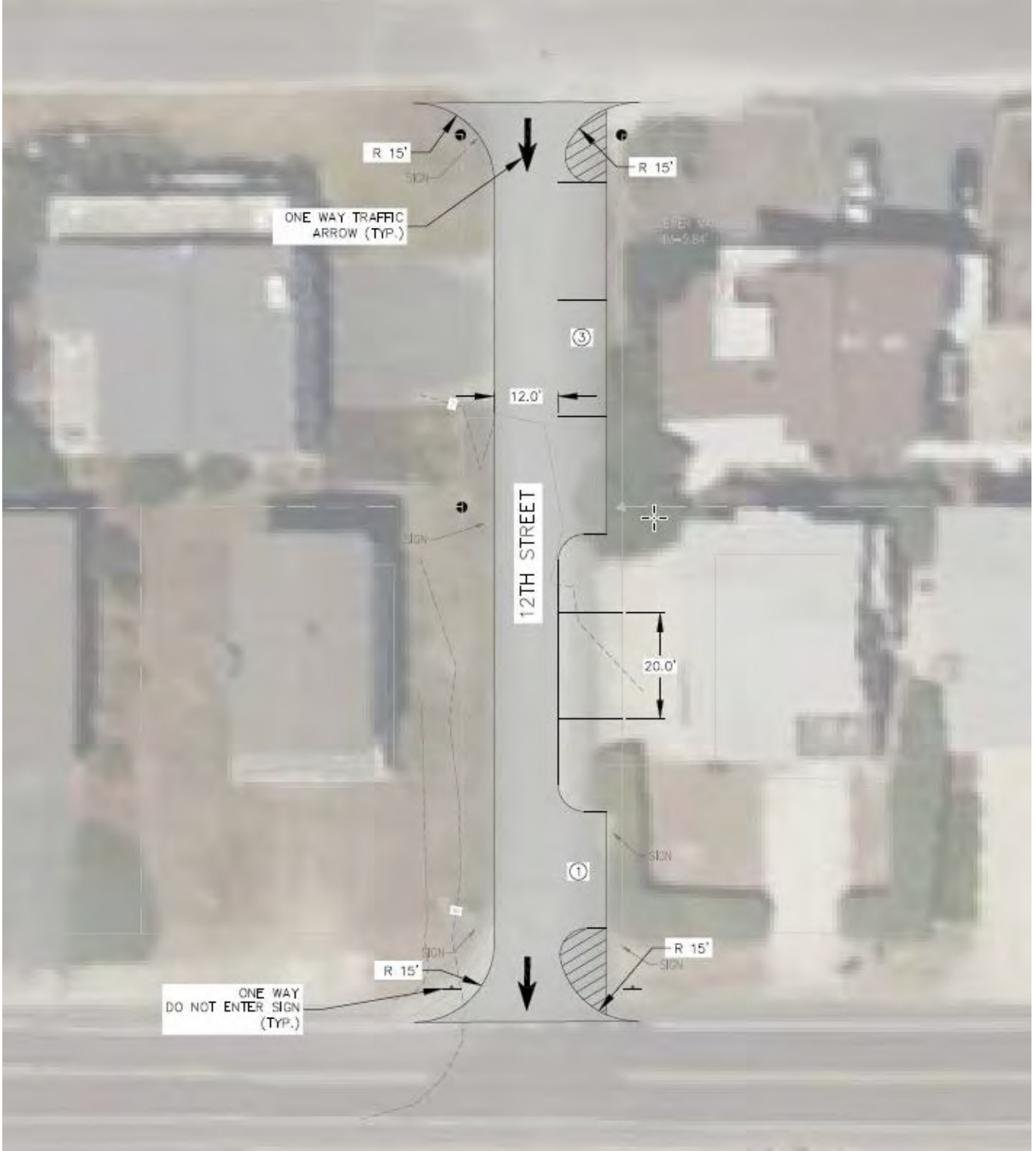


# ADDENDUM D

## PARKING MAPS

**12<sup>th</sup> Street**  
**(under construction)**

APPROX. 4 SPACES



# ADDENDUM D

## PARKING MAPS

# West Main St. NS

(under construction)

APPROX. 35 SPACES



# ADDENDUM D

## PARKING MAPS

# East Main St. NS

(under construction)

APPROX. 78 SPACES



# ADDENDUM D

## PARKING MAPS

# Main St. Side St. Parking

(under construction)

APPROX. 75 LSV SPACES

2<sup>nd</sup>, 3<sup>rd</sup>, 5<sup>th</sup>, 27<sup>th</sup>, 28<sup>th</sup>, 29<sup>th</sup>, 30<sup>th</sup>, 32<sup>nd</sup>, 33<sup>rd</sup>, 34<sup>th</sup>, 35<sup>th</sup>, 36<sup>th</sup>, 37<sup>th</sup> and 39<sup>th</sup>.



**ADDENDUM D**  
PARKING MAPS

**40<sup>th</sup> St. @ Main St.**  
**(under construction)**  
APPROX. 15 SPACES



**ADDENDUM D**  
PARKING MAPS

**NS Dr. W @ 40<sup>th</sup> St.**  
**(under construction)**  
APPROX. 15 SPACES



**ADDENDUM D**  
PARKING MAPS

**NS Dr. W @ SSB S.**  
**(under construction)**  
APPROX. 22 SPACES



**ADDENDUM D**  
**PARKING MAPS**

**NS Dr. E @ SSB S.**  
**(under construction)**  
**APPROX. 4 SPACES**



# ADDENDUM D

## PARKING MAPS

**East Main St. SS**  
**(under construction)**  
APPROX. 93 SPACES



# ADDENDUM D

## PARKING MAPS

**West Main St. SS**  
(under construction)

APPROX. 47 SPACES



## Attachment 2

# MAIN STREET RIGHT-OF-WAY PARKING DEVELOPMENT PLAN FOR TOWN OF SUNSET BEACH

## SUNSET BEACH, NORTH CAROLINA

### PROJECT INFORMATION

**OWNER:** TOWN OF SUNSET BEACH  
700 SUNSET BEACH BLVD.  
SUNSET BEACH, NC 28468

**CONTACT:** LISA ANGLIN, TOWN ADMINISTRATOR/TOWN CLERK  
910.579.2166

**LOCATION:** WEST MAIN STREET  
SUNSET BEACH, NC

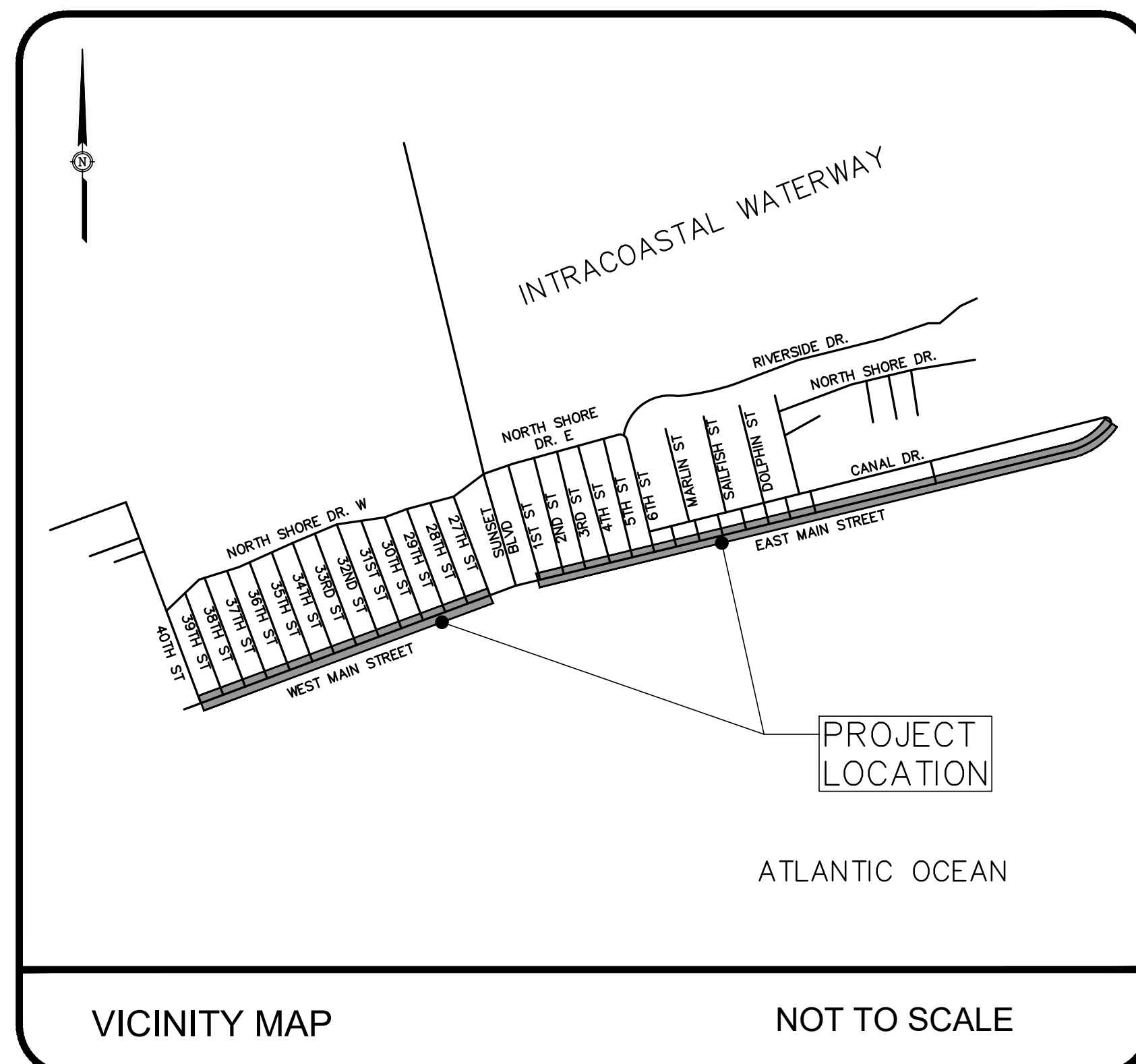
**TOWNSHIP:** SHALLOTTE

**SITE SUMMARY:**  
TOTAL SITE AREA: 198,352 SF = 4.55 AC  
DISTURBED AREA: 198,352 SF = 4.55 AC

**RIVER BASIN:** LUMBER

**RECEIVING STREAM:** INTRACOASTAL WATERWAY  
STREAM INDEX NO.: 15-25  
CLASSIFICATION: SA; HQW

**DATUM:**  
VERTICAL: NAVD88  
HORIZONTAL: NAD 83-2001



### SCHEDULE OF DRAWINGS

- G-001 . . . . . COVER SHEET
- G-002 . . . . . ABBREVIATIONS AND GENERAL NOTES
- SHEET 1 OF 6 . . . . . EXISTING CONDITIONS SURVEY BY COASTAL GEOMATICS
- SHEET 2 OF 6 . . . . . EXISTING CONDITIONS SURVEY BY COASTAL GEOMATICS
- SHEET 3 OF 6 . . . . . EXISTING CONDITIONS SURVEY BY COASTAL GEOMATICS
- SHEET 4 OF 6 . . . . . EXISTING CONDITIONS SURVEY BY COASTAL GEOMATICS
- SHEET 5 OF 6 . . . . . EXISTING CONDITIONS SURVEY BY COASTAL GEOMATICS
- SHEET 6 OF 6 . . . . . EXISTING CONDITIONS SURVEY BY COASTAL GEOMATICS
- P-101 . . . . . PHASING PLAN
- C-100 . . . . . INDEX SHEET
- C-101 . . . . . WEST MAIN STREET NORTH AND SOUTH SIDE PARKING LAYOUTS
- C-102 . . . . . WEST MAIN STREET NORTH AND SOUTH SIDE PARKING LAYOUTS
- C-103 . . . . . WEST MAIN STREET NORTH AND SOUTH SIDE PARKING LAYOUTS
- C-104 . . . . . WEST MAIN STREET NORTH AND SOUTH SIDE PARKING LAYOUTS
- C-105 . . . . . WEST MAIN STREET NORTH AND SOUTH SIDE PARKING LAYOUTS
- C-106 . . . . . EAST MAIN STREET NORTH AND SOUTH SIDE PARKING LAYOUTS
- C-107 . . . . . EAST MAIN STREET NORTH AND SOUTH SIDE PARKING LAYOUTS
- C-108 . . . . . EAST MAIN STREET NORTH AND SOUTH SIDE PARKING LAYOUTS
- C-109 . . . . . EAST MAIN STREET NORTH AND SOUTH SIDE PARKING LAYOUTS
- C-110 . . . . . EAST MAIN STREET NORTH AND SOUTH SIDE PARKING LAYOUTS
- C-111 . . . . . EAST MAIN STREET NORTH AND SOUTH SIDE PARKING LAYOUTS
- C-112 . . . . . EAST MAIN STREET NORTH AND SOUTH SIDE PARKING LAYOUTS
- C-113 . . . . . EAST MAIN STREET NORTH AND SOUTH SIDE PARKING LAYOUTS
- C-114 . . . . . EAST MAIN STREET NORTH AND SOUTH SIDE PARKING LAYOUTS
- C-501 . . . . . DETAILS



712 Village Road SW  
Suite 103  
Shallotte, NC 28470  
910.755.5872  
NC Firm License # C-0459  
mcgillassociates.com



SIGNED AND DATED:

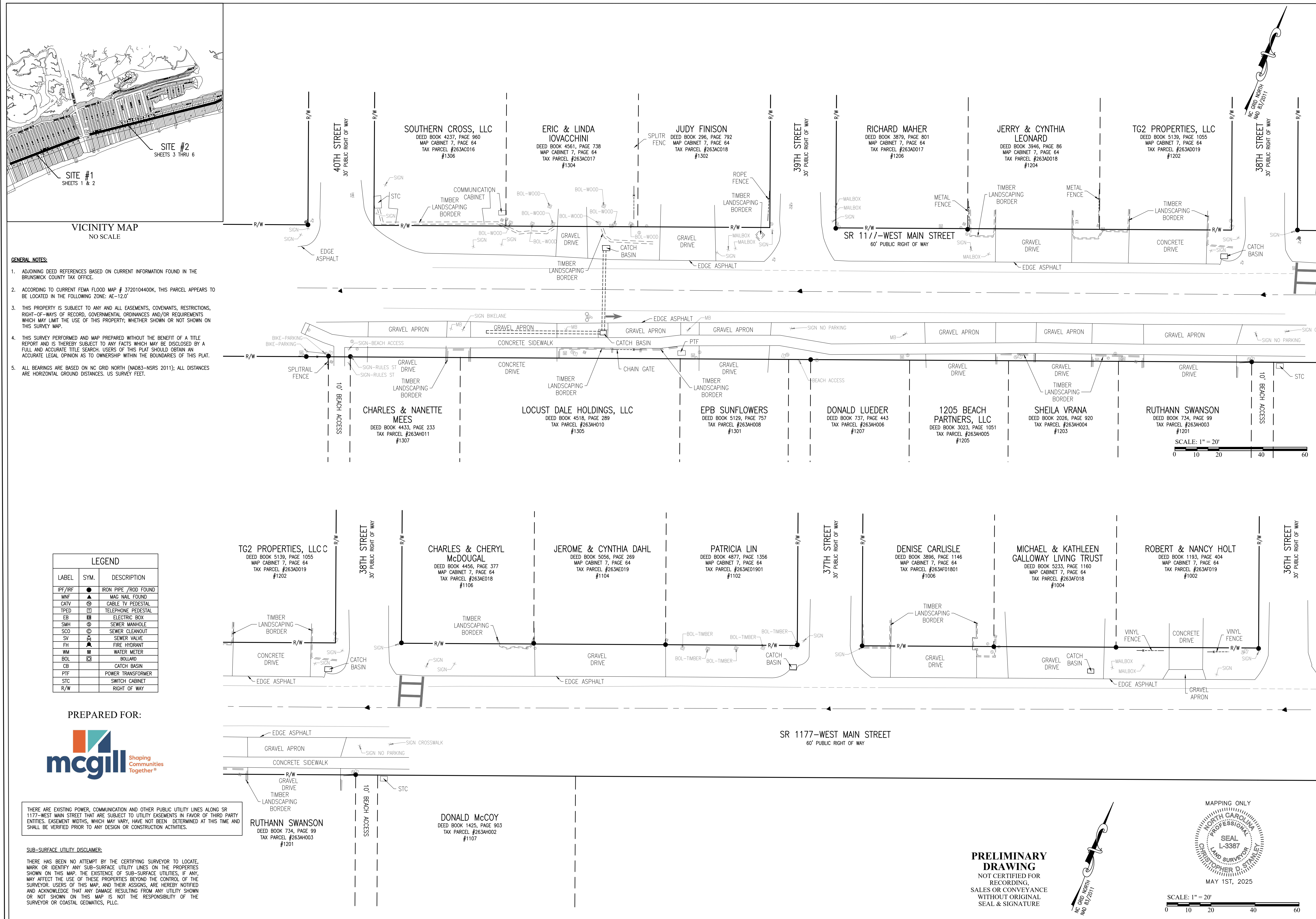
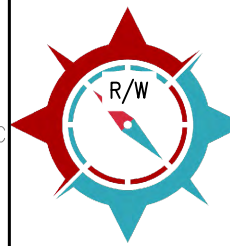
THIS DOCUMENT HAS BEEN DIGITALLY SIGNED AND SEALED IN ACCORDANCE WITH THE STANDARD CERTIFICATION REQUIREMENTS FOUND IN NC ADMINISTRATIVE CODE 21-56.1103(E). THIS DIGITAL SIGNATURE HAS BEEN FOUND BY THE NC BOARD OF EXAMINERS FOR ENGINEERS AND SURVEYORS TO MEET THESE STANDARDS. PLEASE CONTACT THE SIGNER IF YOU NEED ASSISTANCE IN VALIDATING THE SIGNATURE.



DATE  
JULY 2025

SHEET  
G-001





**GENERAL NOTES:**

- ADJOINING DEED REFERENCES BASED ON CURRENT INFORMATION FOUND IN THE BRUNSWICK COUNTY TAX OFFICE.
- ACCORDING TO CURRENT FEMA FLOOD MAP # 3720104400K, THIS PARCEL APPEARS TO BE LOCATED IN THE FOLLOWING ZONE: AE-12.0'
- THIS PROPERTY IS SUBJECT TO ANY AND ALL EASEMENTS, COVENANTS, RESTRICTIONS, RIGHT-OF-WAYS OF RECORD, GOVERNMENTAL ORDINANCES AND/OR REQUIREMENTS WHICH MAY LIMIT THE USE OF THIS PROPERTY, WHETHER SHOWN OR NOT SHOWN ON THIS SURVEY MAP.
- THIS SURVEY PERFORMED AND MAP PREPARED WITHOUT THE BENEFIT OF A TITLE REPORT AND IS THEREBY SUBJECT TO ANY FACTS WHICH MAY BE DISCLOSED BY A FULL AND ACCURATE TITLE SEARCH. USERS OF THIS PLAT SHOULD OBTAIN AN ACCURATE LEGAL OPINION AS TO OWNERSHIP WITHIN THE BOUNDARIES OF THIS PLAT.
- ALL BEARINGS ARE BASED ON NC GRID NORTH (NAD83-NSRS 2011); ALL DISTANCES ARE HORIZONTAL GROUND DISTANCES. US SURVEY FEET.

LEGEND		
LABEL	SYM.	DESCRIPTION
IPF/IRF	●	IRON PIPE / ROD FOUND
MNF	▲	MAG NAIL FOUND
CATV	⊙	CABLE TV PEDESTAL
TPED	⊠	TELEPHONE PEDESTAL
EB	⊞	ELECTRIC BOX
SMH	⊕	SEWER MANHOLE
SCD	⊖	SEWER CLEANOUT
SV	⊗	SEWER VALVE
FH	▲	FIRE HYDRANT
WM	⊞	WATER METER
BOL	⊞	BOLLARD
CB	⊞	CATCH BASIN
PTF	⊞	POWER TRANSFORMER
STC	⊞	SWITCH CABINET
R/W		RIGHT OF WAY



THERE ARE EXISTING POWER, COMMUNICATION AND OTHER PUBLIC UTILITY LINES ALONG SR 1177-WEST MAIN STREET THAT ARE SUBJECT TO UTILITY EASEMENTS IN FAVOR OF THIRD PARTY ENTITIES. EASEMENT WIDTHS, WHICH MAY VARY, HAVE NOT BEEN DETERMINED AT THIS TIME AND SHALL BE VERIFIED PRIOR TO ANY DESIGN OR CONSTRUCTION ACTIVITIES.

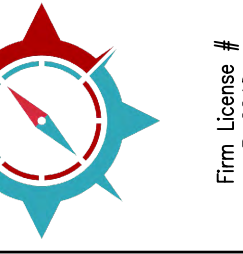
**SUB-SURFACE UTILITY DISCLAIMER:**  
THERE HAS BEEN NO ATTEMPT BY THE CERTIFYING SURVEYOR TO LOCATE, MARK OR IDENTIFY ANY SUB-SURFACE UTILITY LINES ON THE PROPERTIES SHOWN ON THIS MAP. THE EXISTENCE OF SUB-SURFACE UTILITIES, IF ANY, MAY AFFECT THE USE OF THESE PROPERTIES BEYOND THE CONTROL OF THE SURVEYOR. USERS OF THIS MAP, AND THEIR ASSIGNS, ARE HEREBY NOTIFIED AND ACKNOWLEDGE THAT ANY DAMAGE RESULTING FROM ANY UTILITY SHOWN OR NOT SHOWN ON THIS MAP IS NOT THE RESPONSIBILITY OF THE SURVEYOR OR COASTAL GEOMATICS, PLLC.

**PRELIMINARY DRAWING**  
NOT CERTIFIED FOR RECORDING.  
SALES OR CONVEYANCE WITHOUT ORIGINAL SEAL & SIGNATURE

MAPPING ONLY

MAY 1ST, 2025

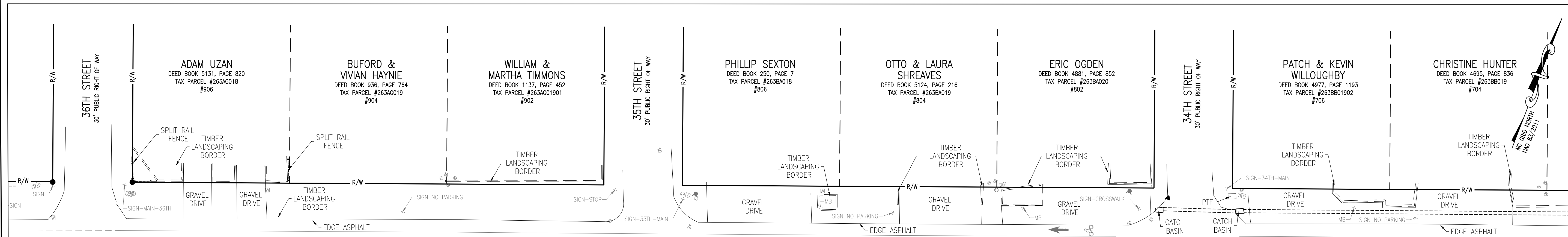
SCALE: 1" = 20'



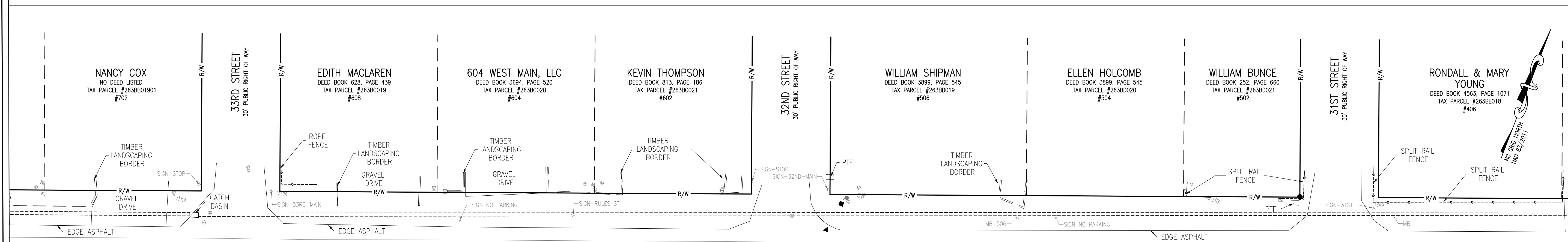
ROUTE SURVEY FOR  
**TOWN OF SUNSET BEACH**

PREPARED FOR MCGILL ASSOCIATES, P.A.  
MAIN STREET PARALLEL PARKING PROJECT  
TOWN OF SUNSET BEACH OCEAN ISLE BEACH,  
SHALLOTTE TOWNSHIP, BRUNSWICK COUNTY, NC

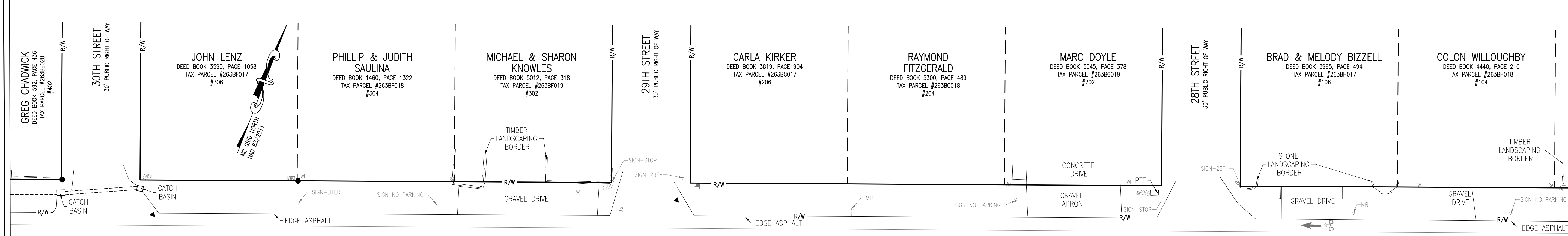
Date: 05-01-2025  
Scale: 1" = 20'  
Drawn By: DML  
Checked By: CDS



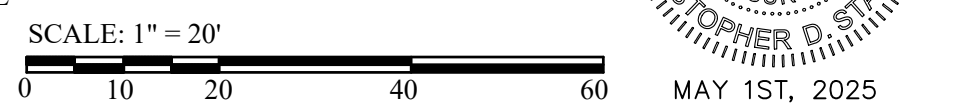
SR 1177-WEST MAIN STREET  
60' PUBLIC RIGHT OF WAY



SR 1177-WEST MAIN STREET  
60' PUBLIC RIGHT OF WAY



SR 1177-WEST MAIN STREET  
60' PUBLIC RIGHT OF WAY

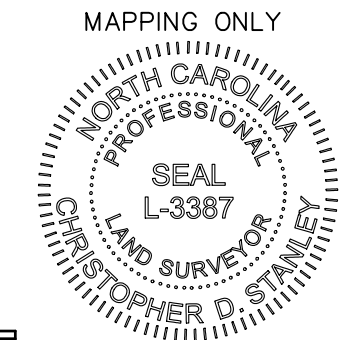


**SUB-SURFACE UTILITY DISCLAIMER:**  
THERE HAS BEEN NO ATTEMPT BY THE CERTIFYING SURVEYOR TO LOCATE, MARK OR IDENTIFY ANY SUB-SURFACE UTILITY LINES ON THE PROPERTIES SHOWN ON THIS MAP. THE EXISTENCE OF SUB-SURFACE UTILITIES, IF ANY, MAY AFFECT THE USE OF THESE PROPERTIES BEYOND THE CONTROL OF THE SURVEYOR. USERS OF THIS MAP, AND THEIR ASSIGNS, ARE HEREBY NOTICED AND ADVISED THAT ANY DAMAGE RESULTING FROM ANY UTILITY SHOWN OR NOT SHOWN ON THIS MAP IS NOT THE RESPONSIBILITY OF THE SURVEYOR OR COASTAL GEOMATICS, PLLC.

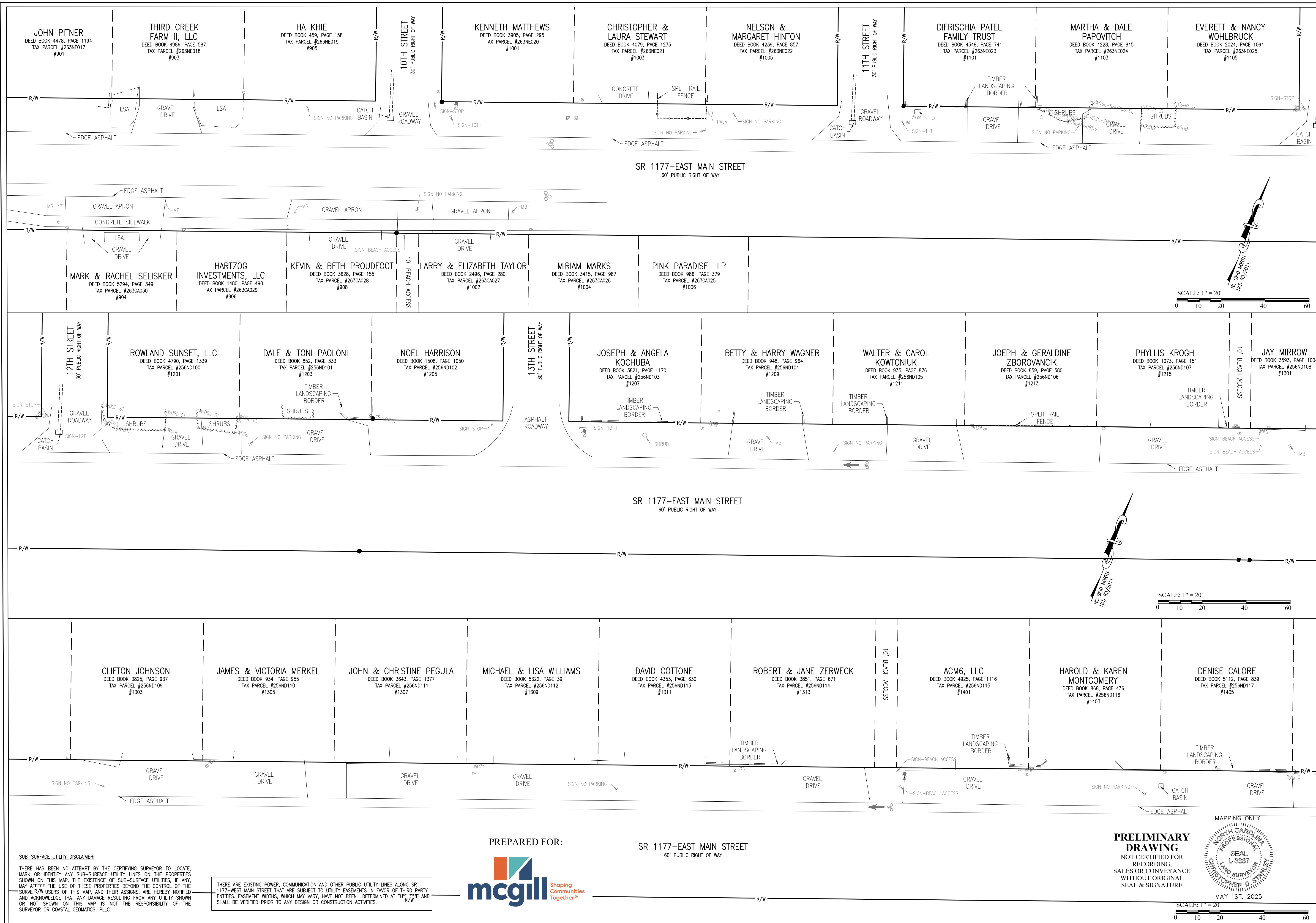
THERE ARE EXISTING POWER, TELEPHONE AND CABLE UTILITY LINES ALONG SR 1177-WEST MAIN STREET THAT ARE SUBJECT TO UTILITY EASEMENTS IN FAVOR OF THIRD PARTY ENTITIES. EASEMENT WIDTHS, WHICH MAY VARY, HAVE NOT BEEN DETERMINED AT THIS TIME AND SHALL BE VERIFIED PRIOR TO ANY DESIGN OR CONSTRUCTION ACTIVITIES.



**PRELIMINARY DRAWING**  
NOT CERTIFIED FOR RECORDING  
SALES OR CONVEYANCE WITHOUT ORIGINAL SEAL & SIGNATURE







Revisions


**COASTALGEOMATICS**  
LAND SURVEYING • MAPPING • PLANNING

Physical Address: 5041-3 Main Street, Shalotte, NC 28470  
Mailing Address: Post Office Box 1560, Shalotte, NC 28459  
Telephone: 910-356-1800 ~ www.coastalgeomatrics.com

NC 0160 NORTH  
MD 05/2011

SCALE: 1" = 20'

0 10 20 40 60

NC 0160 NORTH  
MD 05/2011

SCALE: 1" = 20'

0 10 20 40 60

NC 0160 NORTH  
MD 05/2011

SCALE: 1" = 20'

0 10 20 40 60

ROUTE SURVEY FOR  
**TOWN OF SUNSET BEACH**

PREPARED FOR MCGILL ASSOCIATES, P.A.  
MAIN STREET PARALLEL PARKING PROJECT  
TOWN OF SUNSET BEACH OCEAN ISLE BEACH,  
SHALLOTTE TOWNSHIP, BRUNSWICK COUNTY, NC

**SUB-SURFACE UTILITY DISCLAIMER:**  
THERE HAS BEEN NO ATTEMPT BY THE CERTIFYING SURVEYOR TO LOCATE, MARK OR IDENTIFY ANY SUB-SURFACE UTILITY LINES ON THE PROPERTIES SHOWN ON THIS MAP. THE EXISTENCE OF SUB-SURFACE UTILITIES, IF ANY, MAY AFFECT THE USE OF THESE PROPERTIES BEYOND THE CONTROL OF THE SURVEY R/W USERS OF THIS MAP, AND THEIR ASSIGNS, ARE HEREBY NOTIFIED AND ACKNOWLEDGE THAT ANY DAMAGE RESULTING FROM ANY UTILITY SHOWN OR NOT SHOWN ON THIS MAP IS NOT THE RESPONSIBILITY OF THE SURVEYOR OR COASTAL GEOMATICS, PLLC.

THERE ARE EXISTING POWER, COMMUNICATION AND OTHER PUBLIC UTILITY LINES ALONG SR 1177-WEST MAIN STREET THAT ARE SUBJECT TO UTILITY EASEMENTS IN FAVOR OF THIRD PARTY ENTITIES. EASEMENT WIDTHS, WHICH MAY VARY, HAVE NOT BEEN DETERMINED AT THIS TIME AND SHALL BE VERIFIED PRIOR TO ANY DESIGN OR CONSTRUCTION ACTIVITIES.

PREPARED FOR:

**mcgill** Shaping Communities Together®

SR 1177-EAST MAIN STREET  
60' PUBLIC RIGHT OF WAY

MAPPING ONLY

**PRELIMINARY DRAWING**  
NOT CERTIFIED FOR RECORDING, SALES OR CONVEYANCE WITHOUT ORIGINAL SEAL & SIGNATURE

DATE: 05-01-2025  
SCALE: 1" = 20'  
DRAWN BY: DML  
CHECKED BY: CDS

SEAL L-3387  
NORTH CAROLINA PROFESSIONAL LAND SURVEYOR  
CHRISTOPHER D. STANLEY

MAY 1ST, 2025

SCALE: 1" = 20'

0 10 20 40 60



Revisions

**COASTALGEOMATICS**  
LAND SURVEYING • MAPPING • PLANNING



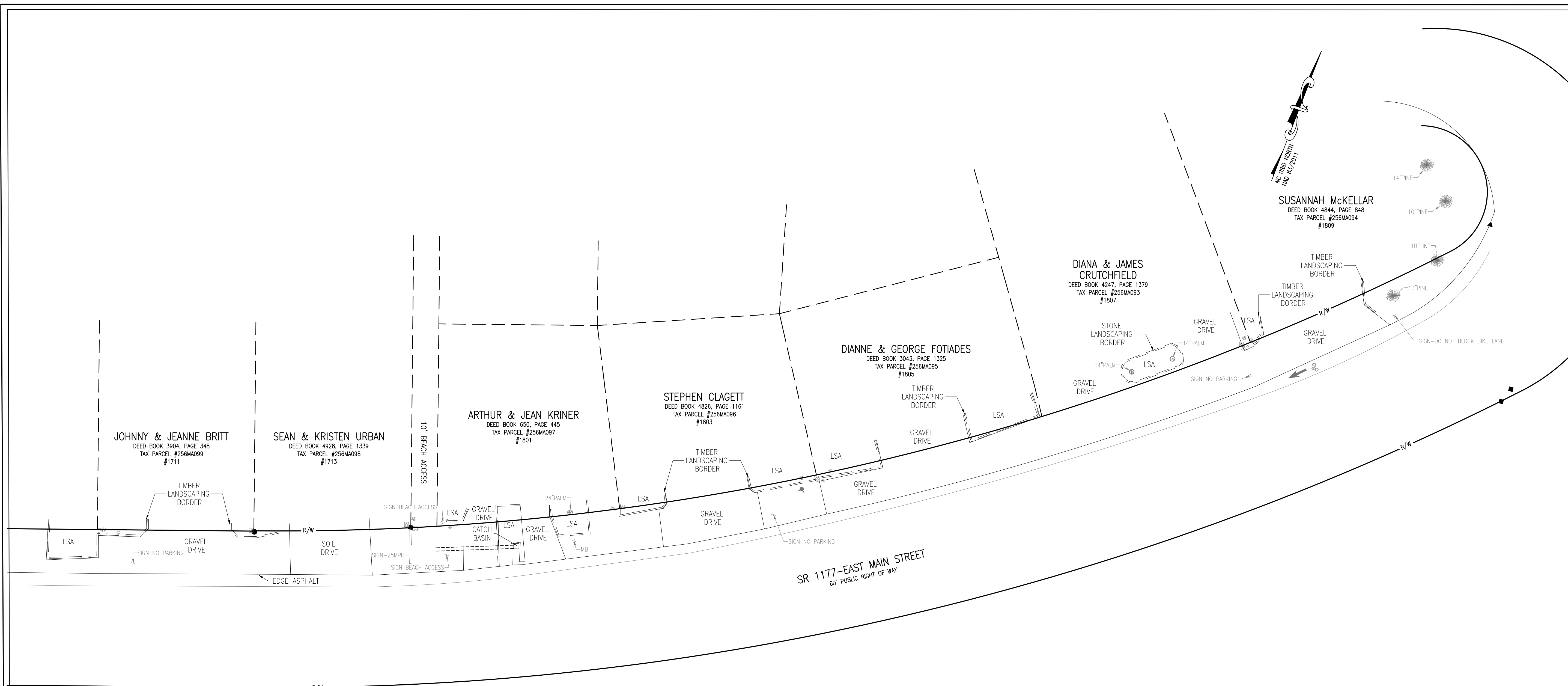
Physical Address: 5041-3 Main Street, Shalotte, NC 28470  
Mailing Address: Post Office Box 1560, Shalotte, NC 28459  
Telephone: 910-356-1800 ~ www.coastalgeomatics.com

Firm License # P-2248

ROUTE SURVEY FOR  
**TOWN OF SUNSET BEACH**

PREPARED FOR MCGILL ASSOCIATES, P.A.  
MAIN STREET PARALLEL PARKING PROJECT  
TOWN OF SUNSET BEACH OCEAN ISLE BEACH,  
SHALLOTTE TOWNSHIP, BRUNSWICK COUNTY, NC

Date: 05-01-2025  
Scale: 1" = 20'  
Drawn By: DML  
Checked By: CDS



PREPARED FOR:



THERE ARE EXISTING POWER, COMMUNICATION AND OTHER PUBLIC UTILITY LINES ALONG SR 1177-WEST MAIN STREET THAT ARE SUBJECT TO UTILITY EASEMENTS IN FAVOR OF THIRD PARTY ENTITIES. EASEMENT WIDTHS, WHICH MAY VARY, HAVE NOT BEEN DETERMINED AT THIS TIME AND SHALL BE VERIFIED PRIOR TO ANY DESIGN OR CONSTRUCTION ACTIVITIES.

**SUB-SURFACE UTILITY DISCLAIMER:**  
THERE HAS BEEN NO ATTEMPT BY THE CERTIFYING SURVEYOR TO LOCATE, MARK OR IDENTIFY ANY SUB-SURFACE UTILITY LINES ON THE PROPERTIES SHOWN ON THIS MAP. THE EXISTENCE OF SUB-SURFACE UTILITIES, IF ANY, MAY AFFECT THE USE OF THESE PROPERTIES BEYOND THE CONTROL OF THE SURVEY R/W USERS OF THIS MAP. AND THEIR ASSIGNS, ARE HEREBY NOTIFIED AND ACKNOWLEDGE THAT ANY DAMAGE RESULTING FROM ANY UTILITY SHOWN OR NOT SHOWN ON THIS MAP IS NOT THE RESPONSIBILITY OF THE SURVEYOR OR COASTAL GEOMATICS, PLLC.

**PRELIMINARY DRAWING**  
NOT CERTIFIED FOR RECORDING,  
SALES OR CONVEYANCE WITHOUT ORIGINAL SEAL & SIGNATURE

